

CRITERIA IV

4.1.1: The Institution has adequate infrastructure and physical facilities for teaching- learning. viz., classrooms, laboratories, computing equipment etc.



Hindustani Education Society's, AUSA

Phone &



AZAD MAHAVIDYALAYA, AUSA

Afsar Nagar, Near Power House, AUSA-413520 Dist. Latur (M.S.)

U.G.C. Approved u/s 2 (f) & 12 (B)

NAAC Re-accredited with 2.67 CGPA

Ref. No. : AMA/

Date : / / 202

I Floor

Hall No	Particulars of Classroom / Lab	Size in feet	Area in Sqft
103	Dept.of Geography & Lab	24 × 15.8	379.2
104	ICT ROOM 1	24 × 15.8	379.2
105	Class Room (Wi Fi Enabled)	24 × 15.8	379.2
106	Class Room (Wi Fi Enabled)	24 × 15.8	379.2
107	Class Room (Wi Fi Enabled)	24 × 15.8	379.2
110	Class Room (Wi Fi Enabled)	19 × 15.8	300.2
111	ICT ROOM 2	32 × 24	768
112	Class Room (Wi Fi Enabled)	32 × 24	768
113	Class Room (Wi Fi Enabled)	32 × 24	768
114	ICT ROOM 3	32 × 24	768


9/2/22
Principal
Azad Mahavidyalaya
Ausa Dist. Latur



Shaping Student's Better Tomorrow

Hindustani Education Society's, AUSA

Phone & Fax

AZAD MAHAVIDYALAYA, AUSA



Afsar Nagar, Near Power House, AUSA-413520 Dist. Latur (M.S.)

U.G.C. Approved u/s 2 (f) & 12 (B)

NAAC Re-accredited with 2.67 CGPA

Ref. No. : AMA/

Date : / / 202

II Floor

Hall No	Particulars of Classroom / Lab	Size in feet	Area in Sqft
202	Class Room (Wi Fi Enabled)	24 × 15.8	379.2
203	Class Room (Wi Fi Enabled)	24 × 15.8	379.2
204	Class Room (Wi Fi Enabled)	24 × 15.8	379.2
205	Class Room (Wi Fi Enabled)	24 × 15.8	379.2
206	Class Room (Wi Fi Enabled)	24 × 15.8	379.2
207	Class Room (Wi Fi Enabled)	24 × 15.8	379.2
209	Class Room (Wi Fi Enabled)	19 × 15.8	300.2
210	Class Room (Wi Fi Enabled)	20 × 15.8	316
211	ICT ROOM 4	32 × 24	768
212	Class Room (Wi Fi Enabled)	32 × 24	768
213	ICT ROOM 5	32 × 24	768
214	Seminar Hall	32 × 24	768

Principal
8/2/22

Azad Mahavidyalaya
AUSA Dist. Latur



Shaping Student's Better Tomorrow

Hindustani Education Society's, AUSA

Phone &



AZAD MAHAVIDYALAYA, AUSA

Afsar Nagar, Near Power House, AUSA-413520 Dist. Latur (M.S.)

U.G.C. Approved u/s 2 (f) & 12 (B)

NAAC Re-accredited with 2.67 CGPA

Ref. No. : AMA/

Date : / / 202

4.1.1 The institution has adequate facilities for teaching- learning, viz., classrooms, laboratories, computing equipment, etc.

The floor wise details of teaching classrooms, ICT hall, seminar hall, laboratories, computing laboratory is tabulated as below.

Ground Floor

Hall No	Particulars of Classroom / Lab	Size in feet	Area in Sqft
4	Dept.of Mathematics & Computer Sci Lab	24 × 15.8	379.2
5	Dept.of Chemistry and Physical Chemistry Lab -1	24 × 15.8	379.2
6	Chemistry Lab -2	24 × 15.8	379.2
11	Dept.of Zoology and Lab	32 × 12	384
12	Dept.of Fishery Science and Lab	32 × 12	384
13	Dept.of Microbiology and Lab	32 × 12	384
14	Dept.of Botany and Lab	32 × 12	384
15	Dept. of Electronics and Lab	32 × 12	384
16	Dept.of Physics and Lab	32 × 12	384

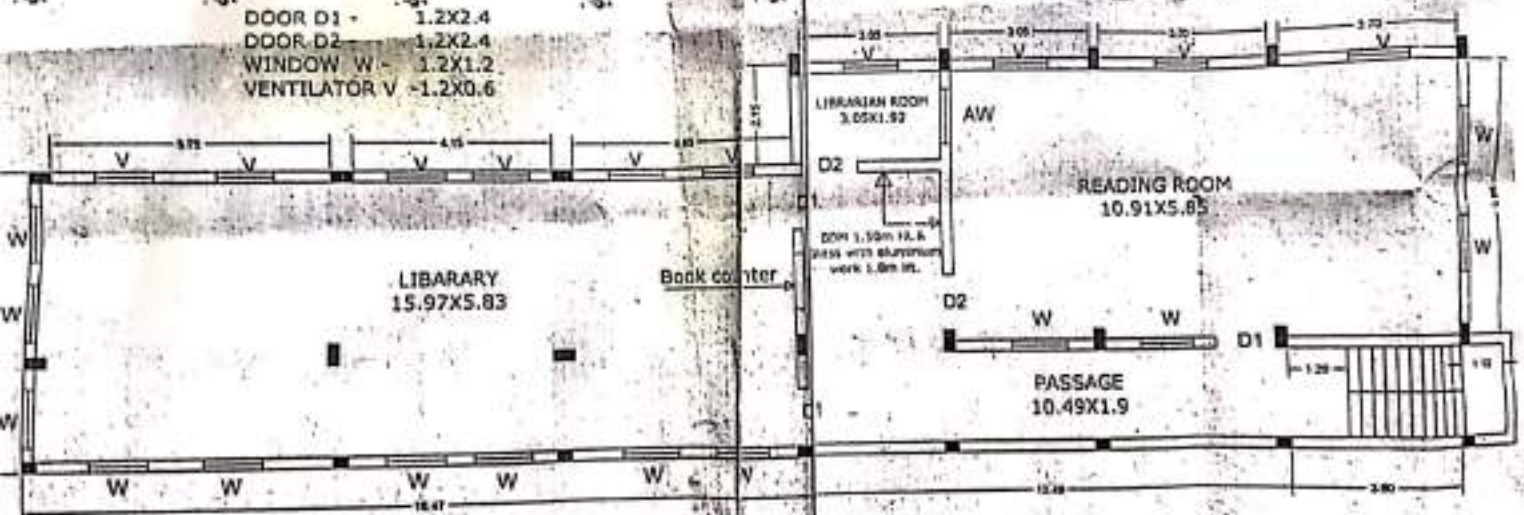

Principal
Principal
Azad Mahavidyalaya AUSA
Dist. Latur

CAPUS 1 - ANNEX BUILDING - 1



PROPOSED CONSTRUCTION / EXTENSION BUILDING OF AZAD MAHAVIDHYALAYA AUSA

DOOR D1 - 1.2X2.4
DOOR D2 - 1.2X2.4
WINDOW W - 1.2X1.2
VENTILATOR V - 1.2X0.6



FIRST FLOOR PLAN

Principal
Azad Mahavidyalaya
Ausa, Dist. Latur

Principal
Azad Mahavidyalaya
Ausa, Dist. Latur

Principal
Azad Mahavidyalaya

UDAY P. JOSHI
Architect Engineer
R. No. M.C. 17/2017 of Latur

AZAD MAHAVIDYALAYA, CAMPUS



GPS map showing 1) Azad college Ausa Main Campus 2)Azad Teakwood Farm on Campus-I, 3) Azad college library on campus- I, 4) Azad Indoor Sports Complex on Campus-II



Azad Mahavidyalaya, Ausa Main campus



Azad Mahavidyalaya, Ausa Main campus



Azad Teakwood farm



Azad College Library



Front View of Azad indoor Sports Complex situated on North side of National Highway in campus II

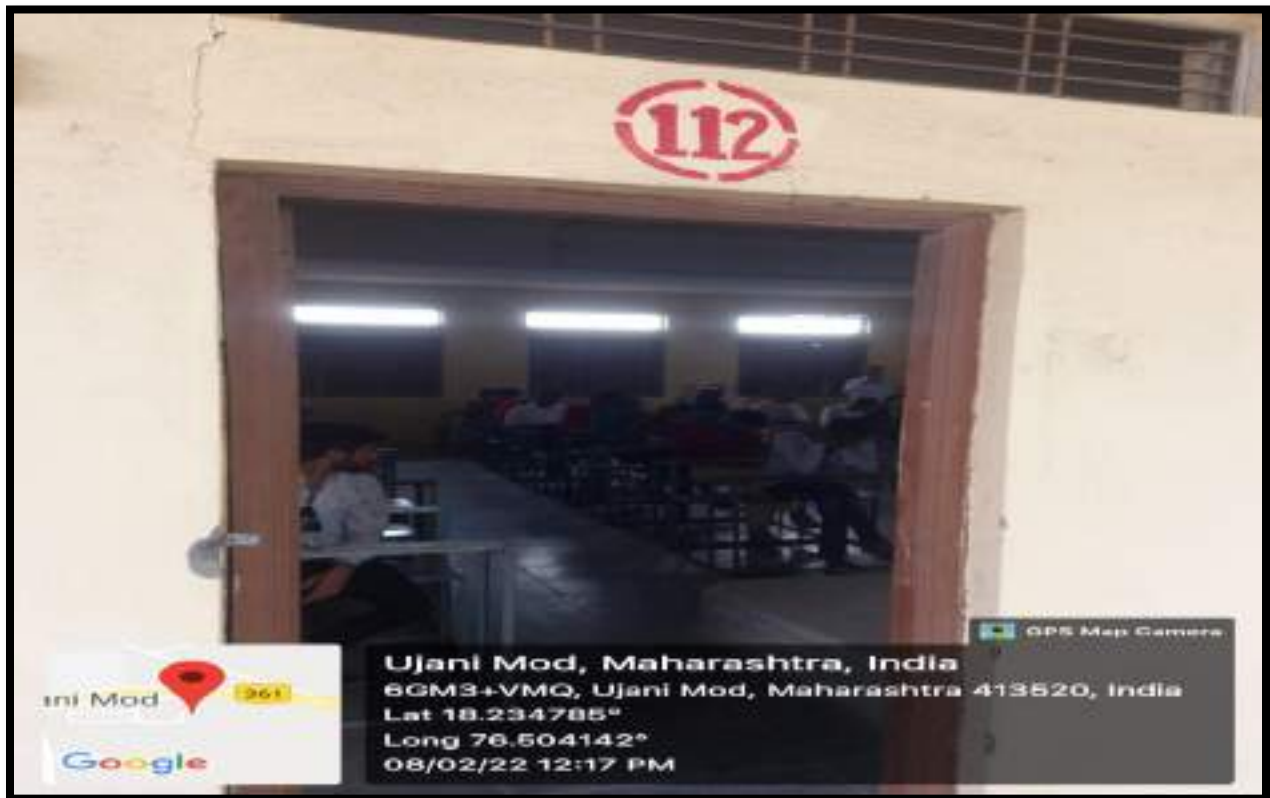
Class Room Photographs



Class Room No. 105 (External view)



Class Room No. 106 (External view)



Class Room No. 112 (External view)



Class Room No. 112 (Internal view)



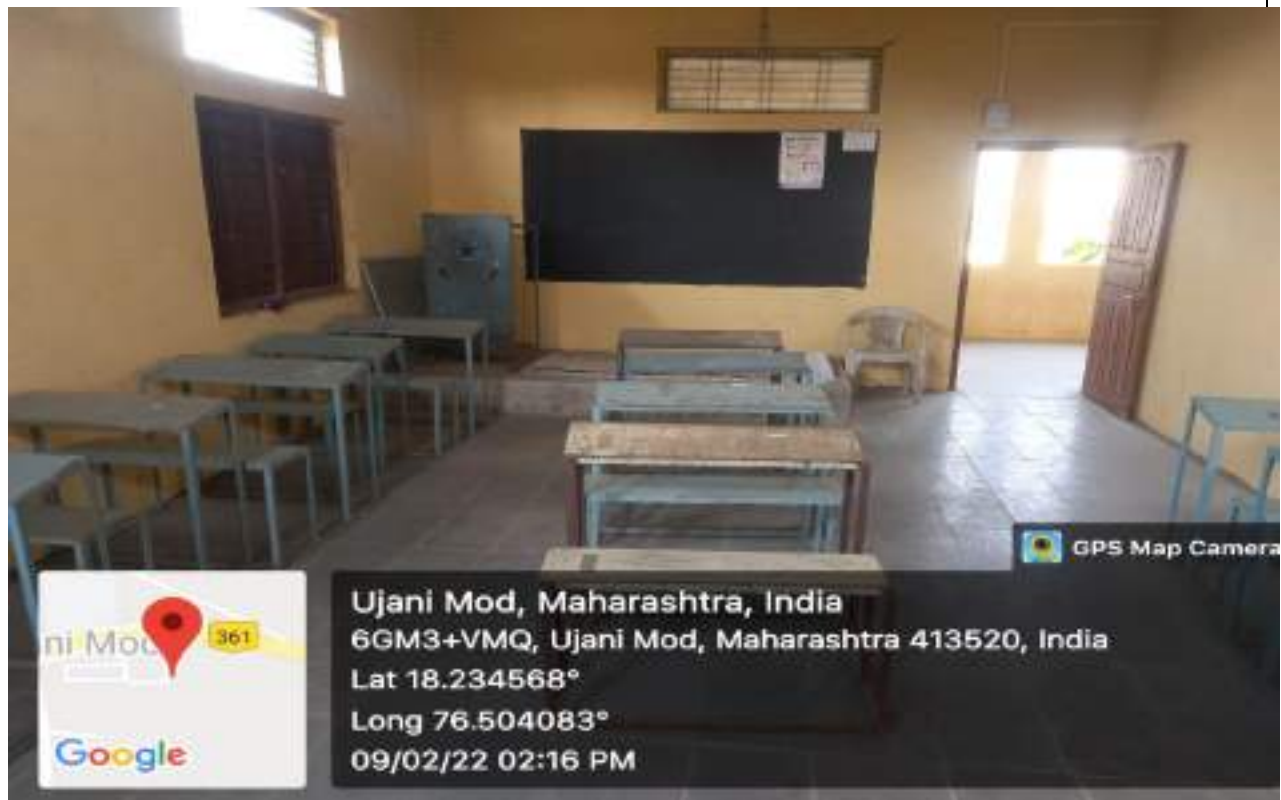
Class Room No. 113 (External view)



Class Room No. 113 (Internal view)



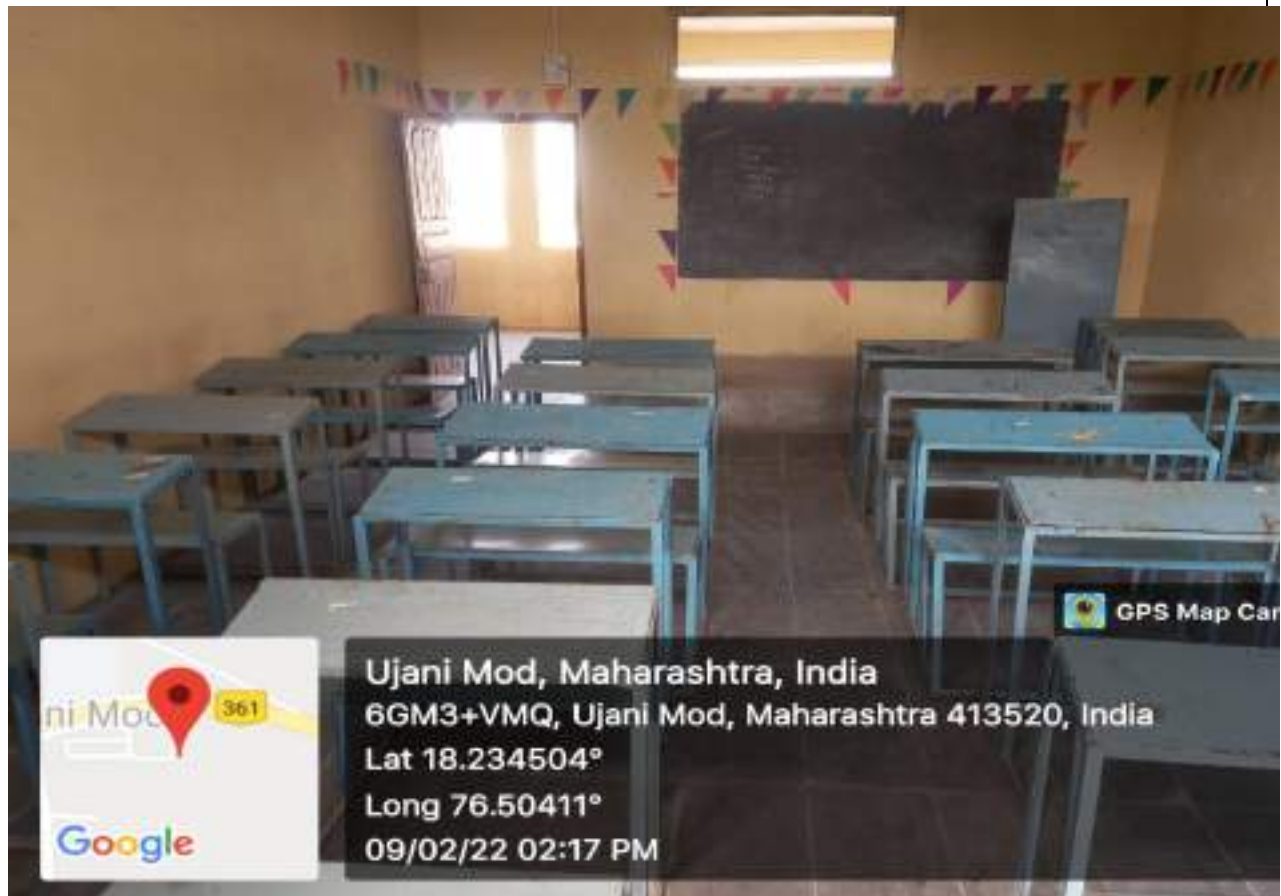
Class Room No. 202 (External view)



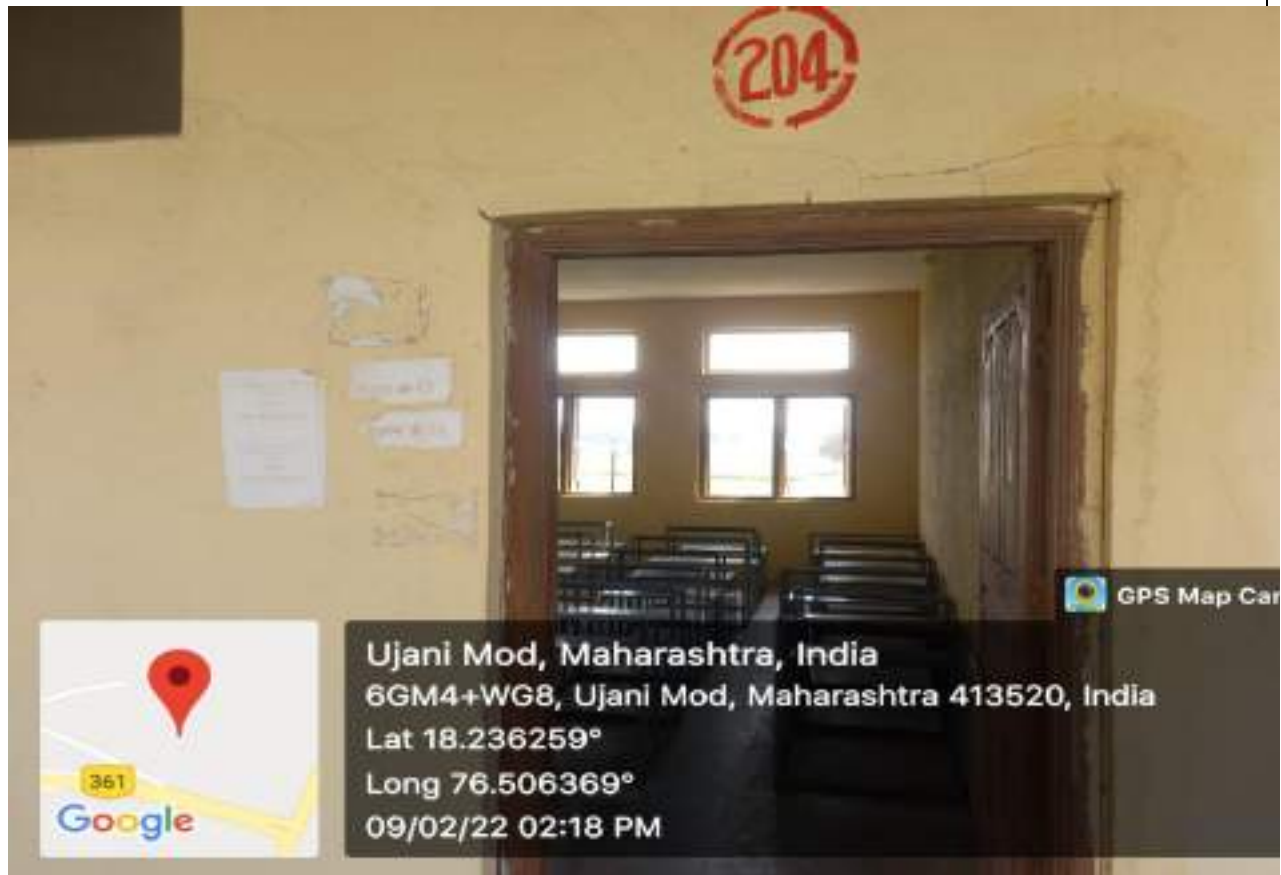
Class Room No. 202 (Internal view)



Class Room No. 203 (External view)



Class Room No. 203 (Internal view)



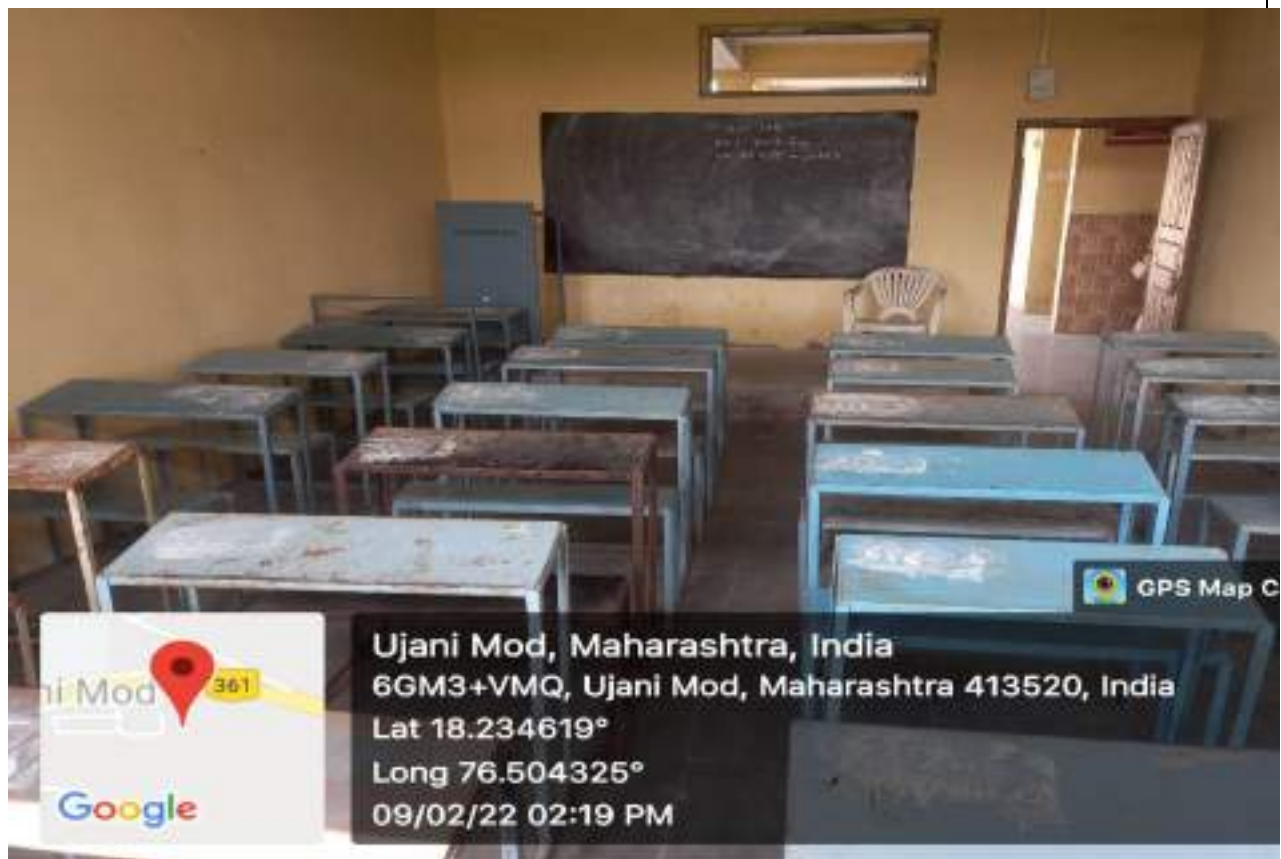
Class Room No. 204 (External view)



Class Room No. 204 (Internal view)



Class Room No. 205 (External view)



Class Room No. 205 (Internal view)



Class Room No. 206 (External view)



Class Room No. 206 (Internal view)



Class Room No. 207 (External view)



Class Room No. 207 (Internal view)



Class Room No. 209 (External view)



Class Room No. 209 (Internal view)



Class Room No. 210 (External view)



Class Room No. 210 (Internal view)

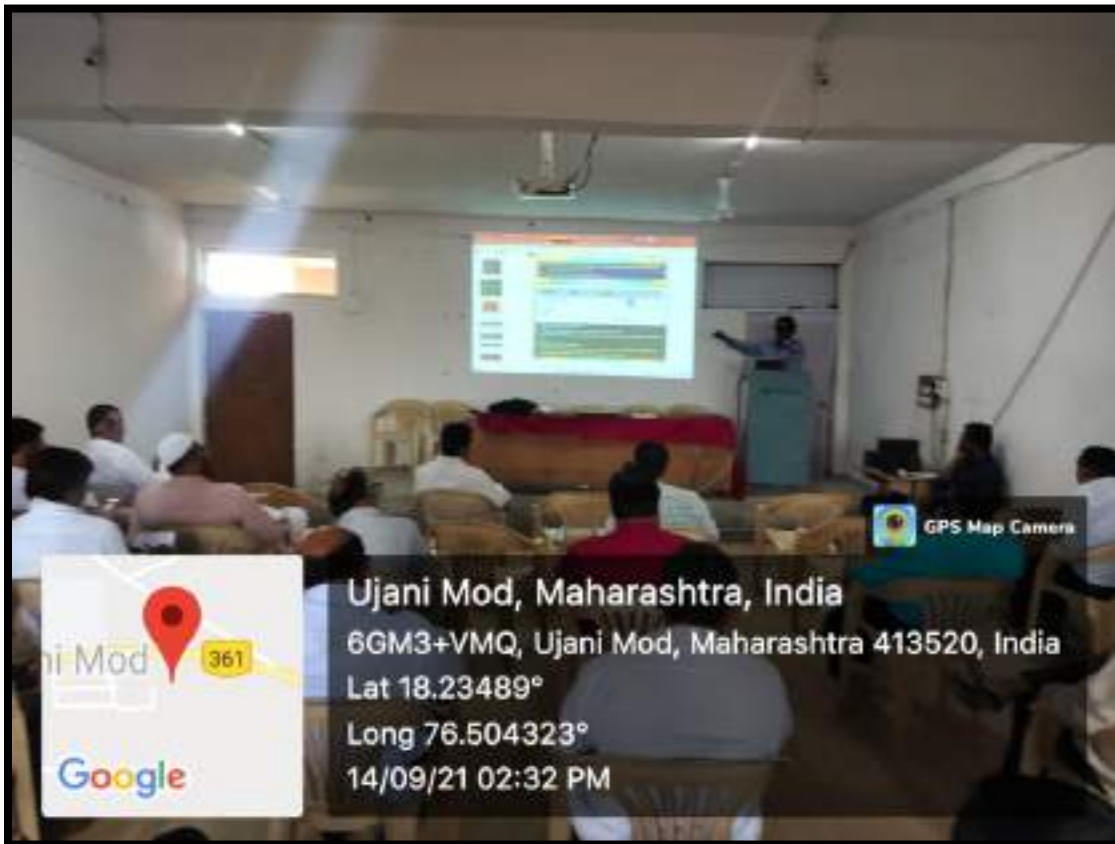


Class Room No. 212 (External view)



Class Room No. 212 (Internal view)

SEMINAR HALL



ICT ROOM



 GPS Map
Camera Lite

6GM3+VMQ, Ujani Mod, Maharashtra 413520, India

Latitude

18.2347039°

Longitude

76.5041831°

Local 03:35:13 PM

GMT 10:05:13 AM

Altitude 572.5 meters

Saturday, 12-02-2022

ICT ROOM NO-2



GPS Map
Camera Lite

6GM3+VMQ, Ujani Mod, Maharashtra 413520, India

Latitude

18.2347236°

Longitude

76.5041375°

Local 03:36:14 PM

GMT 10:06:14 AM

Altitude 572 meters

Saturday, 12-02-2022



6GM3+WCJ, Ujani Mod, Maharashtra 413520, India

Latitude

18.23510517°

Longitude

76.50410014°

Local 03:36:54 PM

GMT 10:06:54 AM

Altitude 598.81 meters

Saturday, 12-02-2022

ICT ROOM NO.4

211

OF



GPS Map
Camera Lite

6GM3+VMQ, Ujani Mod, Maharashtra 413520, India

Latitude
18.2346628°

Longitude
76.5041539°

Local 03:38:09 PM
GMT 10:08:09 AM

Altitude 571.3 meters
Saturday, 12-02-2022



6GM3+VMQ, Ujani Mod, Maharashtra 413520, India

Latitude
18.23497446°

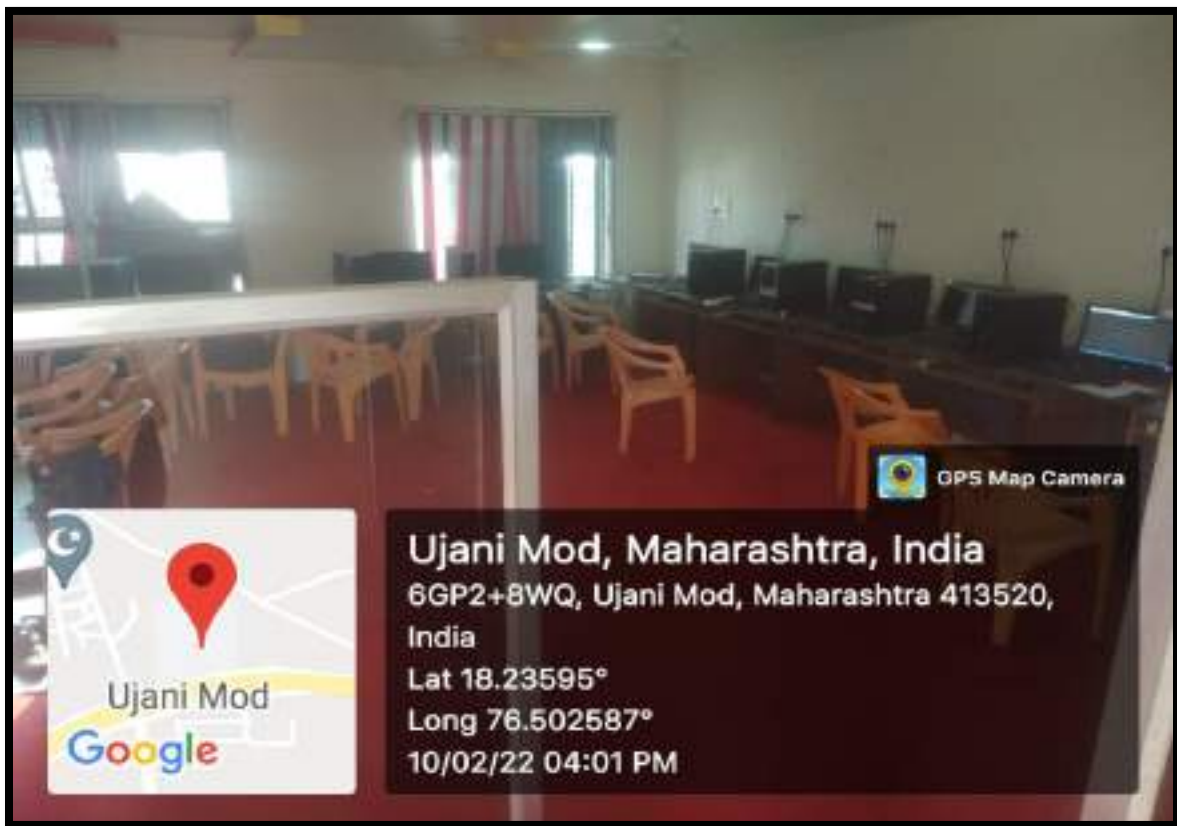
Longitude
76.50403744°

Local 03:38:34 PM
GMT 10:08:34 AM

Altitude 613.46 meters
Saturday, 12-02-2022

LABORATORIES





COMPUTER LAB







Ujani Mod, Maharashtra, India

6GM3+VMQ, Ujani Mod, Maharashtra 413520, India

Lat 18.234693°

Long 76.504173°

09/02/22 03:58 PM



Ujani Mod, Maharashtra, India

6GM3+VMQ, Ujani Mod, Maharashtra 413520, India

Lat 18.234707°

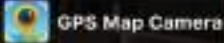
Long 76.503959°

11/02/22 05:56 PM





Ujani Mod, Maharashtra, India
6GM3+VMQ, Ujani Mod, Maharashtra 413520, India
Lat 18.234791°
Long 76.504164°
11/02/22 05:57 PM



Ujani Mod, Maharashtra, India
6GM3+VMQ, Ujani Mod, Maharashtra 413520, India
Lat 18.234693°
Long 76.504173°
09/02/22 03:58 PM



103

Department Of
Geography

103

GH

GPS Map Camera



Ujani Mod, Maharashtra, India
6GM3+VMQ, Ujani Mod, Maharashtra 413520,
India
Lat 18.234833°
Long 76.504111°
11/02/22 06:00 PM